

Installation Instruction

(BMW 5 Series 2017+)

Precautions

- All pictures in this manual are for reference only. Pictures and objects may differ, but the installation method is the same.
- In order to facilitate your installation, please carefully read the product manual before installation; When installing, protect your car's surface and avoid scratching.
- Please check regularly if all accessories connected with the car are loose to ensure safety.

Installation Steps

Refer to the parts list and accessory drawings to check if the accessories are complete. After the product is installed, press the tailgate button for 3-5 seconds. You will hear a sound "DI——" and then loose your hand. Press the tailgate button again and close it. You will hear two sounds. Tail gate learning is finished.



1.Remove the boot cover first.



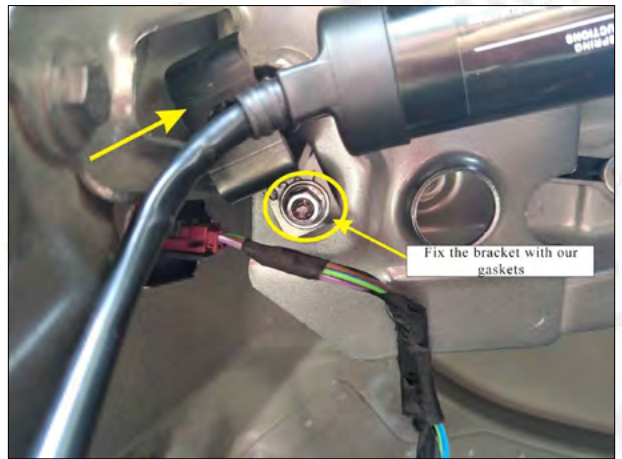
2-1



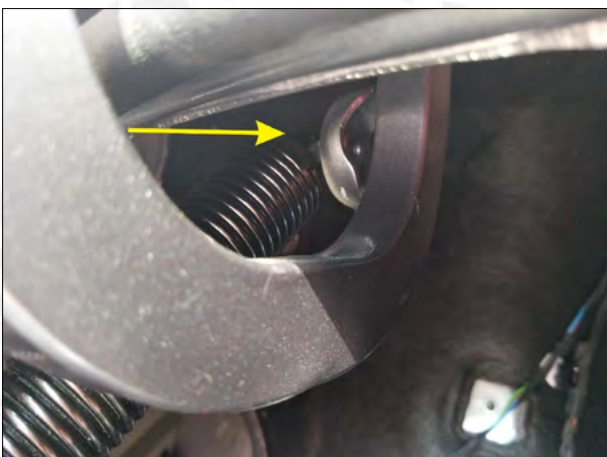
2. Remove these three buttons and remove the left trim panel (Same as the left and right steps).



3. Remove the plastic trim panel (Same as the left and right steps).



4. Remove the original car spring. Install our left bracket and brace rod, add a gasket on the hole of the bracket.



5. Install the tail of our brace rod with the original ball head (Same as the left and right steps).



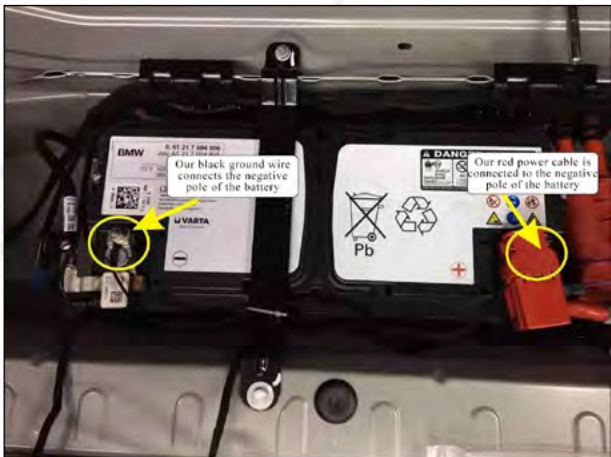
6. Left brace rod installation completed.



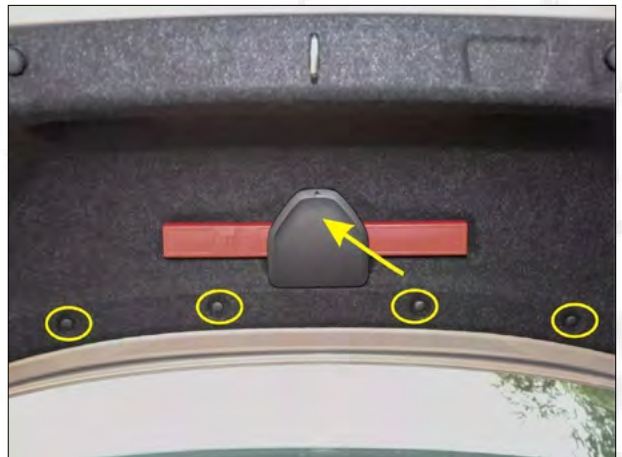
7. Remove the original car spring. Install our right bracket and brace rod, add a gasket on the hole of the bracket.



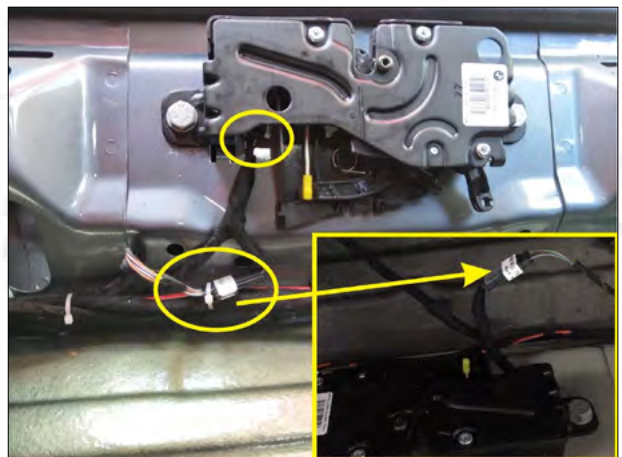
8. Right brace rod installation completed.



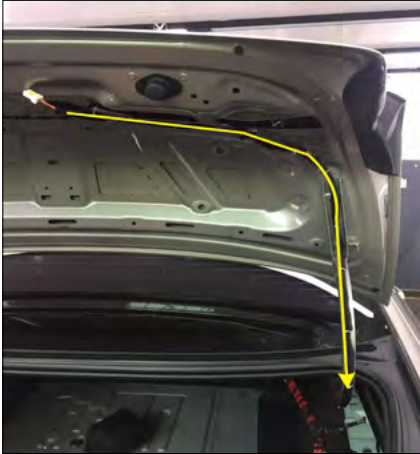
9. Remove the button. Our power cable connects to the positive and negative poles of the battery in the trunk and fixed the harness with a cable tie



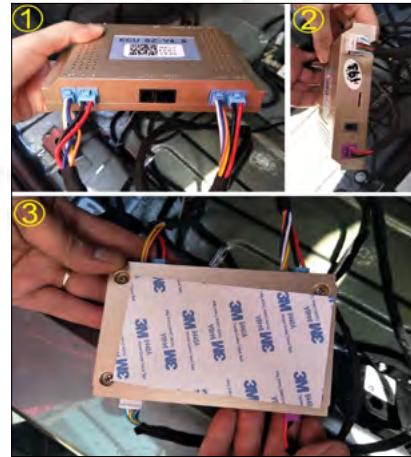
10. Remove the trim panel buckles and warning plate buckles. Remove the trim panel.



11. Find the original car electric suction in the rear door trunk.



12. Unplug this socket from the electric suction of the original car and insert the three-way socket.



13. The three-way cable is routed along the yellow line arrow to the control box, and fixed the original vehicle wire harness with the cable tie.



14. Insert the Hall cable, the power cable and switch wire into the control box (As shown in the figure). Stick 3M paster on the back of the control box.



15. The control box is installed on the left side of the battery, fixed with our 3M paster and the harness is fixed with a cable tie.

16. Loosen the original car lock screw and fine-tune the lock 2-3mm.



17. Punch and install the tailgate switch button on the right side of the tailgate.

After the installation is complete, you must set the tailgate learning. Make sure that the door can be opened and closed in place. (Raise the tailgate to ideal height. Then press the tailgate button for 3-5 seconds. You will hear a sound "DI——" and then loose your hand. Press the tailgate button again and close it. You will hear two sounds "DI DI". Tail gate learning is finished.) If you do not hear two sounds, learning is unsuccessful and you need to re-learn. If you can not close the door, use your hand to push the door to close when you are learning.

Disclaimer

Due to improper installation and improper use, caused the relevant issues and losses, these not include within our company 's warranty. Thanks for your purchasing our products. Please read the manual carefully before use and collect it for later reference.

Key Control Method

1. Press the original Key fobs three times to open and close the door.
2. Press the front switch button to open and close the door.

Setting Height

- 1.Raise the tailgate to the ideal height;
- 2.Press the tailgate switch for 3-5s;
- 3.When you hear a long sound "Di——", loose your hand and press the tailgate switch again to close the door.
- 4.When you hear two sounds "Di Di", Setting height is finished.

Note: Do not close the door with your hands after setting the ideal height.

Be sure to use our own tailgate switch.

Fault Solution

The original key fob does not work	Check if the yellowe central control line is connected.
Not working after installation	1.Check if the positive power supply is connected with 12V-16V. 2.Check if the power fuse is inserted. 3.Check if the ground wire is connected.
Closing the tailgate not in place The tailgate can only open to half	1.Check if the left and right bracket are installed reversed. 2.Check if the control box wire is inserted. 3.Check if the brackets are fixed with our screws. 4.There are two rubbers on the left and right sides of the original tailgate cover. Check if they are loose and need to be tightened.



All rights reserved.